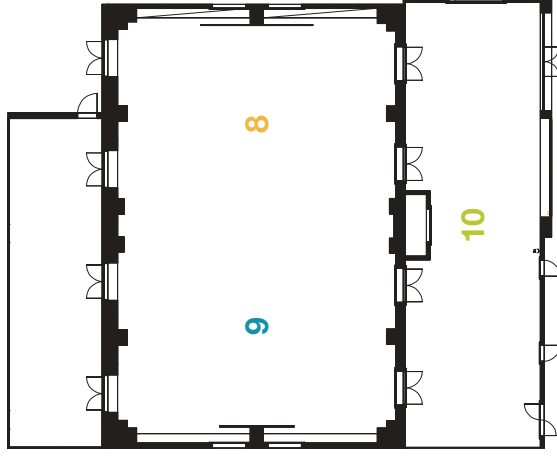


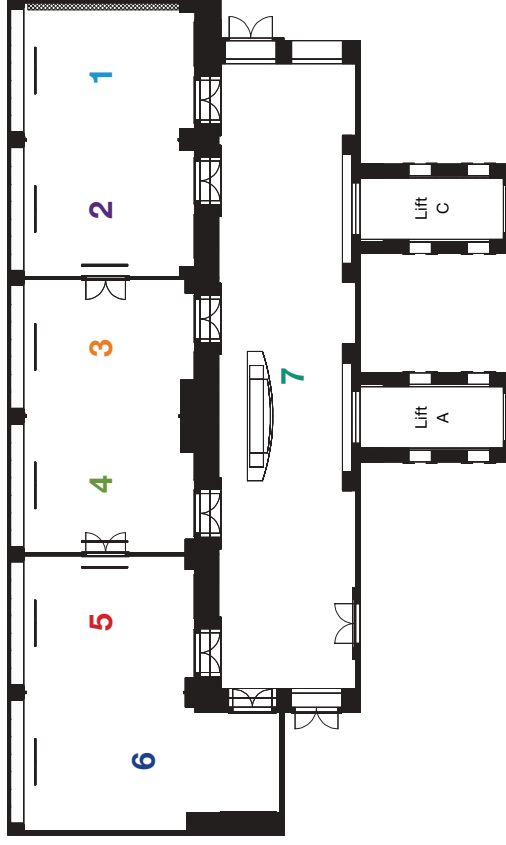
quality indulgence

Room rental includes the following services:
 One-time daily seating arrangements, climate control and standard cleaning standard technology - flip chart and screen.

3. Floor



2. Floor



Meeting rooms	Theatre / auditorium	Classroom	Reception	Banquet	U-shape	Room size in sq.m	Room length in metres	Room width in metres	Room height in metres	Hall rental in EUR from		
										All-day	Half-day up to 4 hrs	Exhibition
2. Floor - Classic Salons												
1 Salon Ehrlich I	40	24	35	30	19	43	5,90	7,40	2,70	290	170	580
2 Salon Ehrlich II	40	24	35	30	19	43	5,90	7,40	2,70	290	170	580
Salon Ehrlich I + II	80	50	70	60	30	87	11,80	7,40	2,70	550	320	1.100
3 Salon Einstein I	40	24	35	30	19	43	5,90	7,40	2,70	290	170	580
4 Salon Einstein II	40	24	35	30	19	43	5,90	7,40	2,70	290	170	580
Salon Einstein I + II	80	50	70	60	30	87	11,80	7,40	2,70	550	320	1.100
5 Salon Virchow I	40	24	35	30	19	43	5,90	7,40	2,70	290	170	580
6 Salon Virchow II	40	24	35	30	19	59	11,00	5,90	2,70	290	170	580
Salon Virchow I + II*	80	50	70	60	30	102	17,30	5,90	2,70	550	320	1.100
7 Foyer 2. Etage			150			159	27,00	5,90	2,70	-	-	-
3. Floor - Conference- and Ballroom												
8 Saal Döblin I	160	100	170	100	40	174	11,60	15,00	5,00	1.200	680	2.400
9 Saal Döblin II	160	100	170	100	40	174	11,60	15,00	5,00	1.200	680	2.400
Saal Döblin I + II	320	240	350	280 (240**)	70	350	23,30	15,00	5,00	2.300	1.300	4.600
10 Foyer Saal Döblin			150			179	23,90	7,50	2,70	-	-	-

* L-shape ** with dancefloor